

ROUTE 122

Mount Ellen

ROUTE OVERVIEW

Route 122 is a Seasonal Local route that operates between Sugarbush's Lincoln Peak and Mount Ellen during the ski season. The route travels primarily along German Flats Road and provides service to Sugarbush's Lincoln Peak and Mount Ellen base areas (see Figure 1). The route serves two primary functions – to transport riders between the two base areas, and to transport skiers who ski Slide Brook area back to one of the base areas. The route also provides the only link between the two base areas when the Slide Brook Express chair lift is not operating.

Route 122 operates during the winter ski season and provides service seven days a week, every 30 minutes from 8:00 AM to 5:00 PM (see Table 1).

All service operates directly between the two base areas. From Lincoln Peak, buses travel down the Sugarbush Access Road to German Flats Road to the Mount Ellen Access Road. Service from Mount Ellen operates in reverse.

RIDERSHIP

As on all of the Mad River Valley routes, ridership is highest on weekends and lowest on weekdays. Route 122 carries an average of 458 passengers on Saturdays, 314 on Sundays, and 89 on weekdays. Actual ridership on any given day can be either much higher or lower depending upon snow conditions.

Figure 1: Route Map

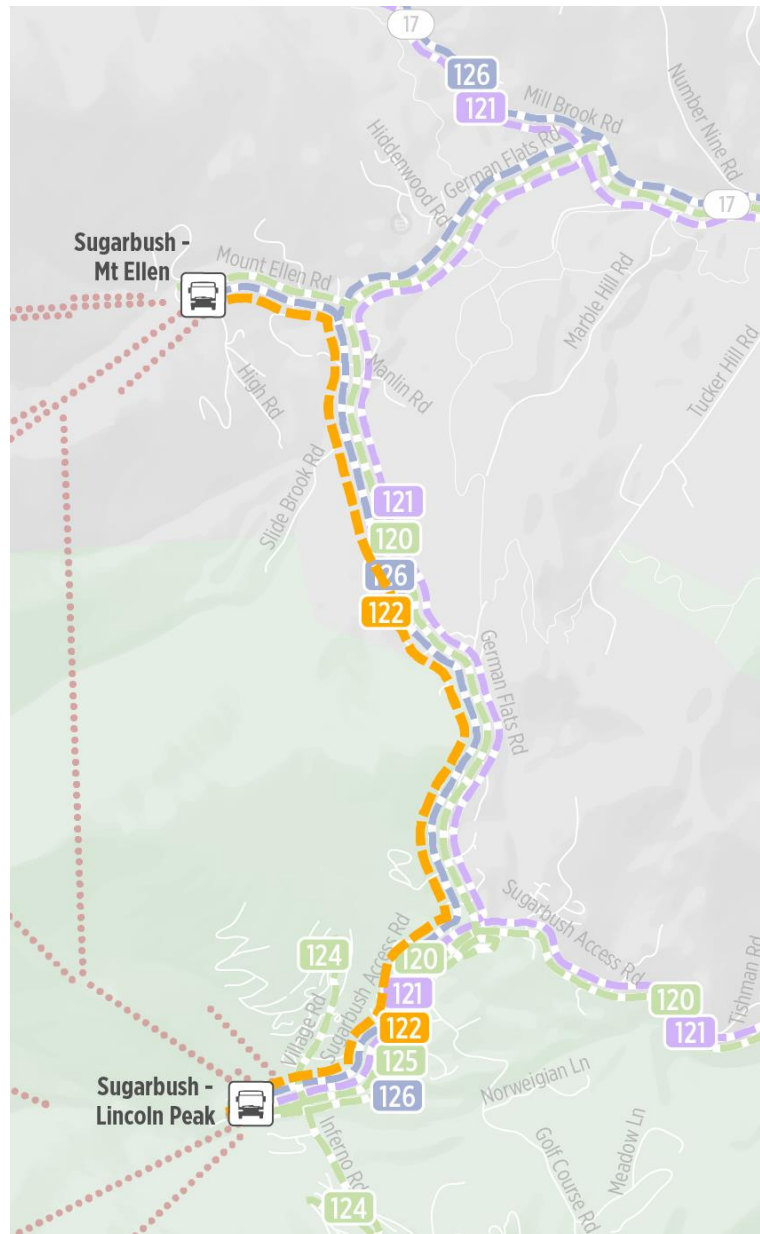


Table 1: Schedule Statistics

SERVICE DAY	SPAN OF SERVICE	FREQUENCY (MIN)	DAILY TRIPS (OUTBOUND/INBOUND)
Monday-Friday	8:00 AM to 5:00 PM	30/30/—	18/18
Saturday	8:00 AM to 5:00 PM	30/30/—	18/18
Sunday	8:00 AM to 5:00 PM	30/30/—	18/18

Note: Peak frequencies are calculated for service between 6:00 am – 9:00 am & 3:00 pm – 6:00 pm. Midday service is 9:00 am – 3:00 pm. Evening service is for service after 6:00 pm. Saturday and Sunday frequencies are shown as AM/PM.

Ridership by Stop

Weekdays

Nearly all weekday ridership is to or from the two base areas, with an average of 45 boardings at Lincoln and 38 at Mount Ellen (see Figure 2). An average of one passenger boards at the bottom of Slide Brook, and four others board at other locations.

Saturdays

Weekend ridership is much higher than weekday ridership (see Figure 3). On Saturdays, Lincoln Peak averages 230 boarding, and Mount Ellen averages 184. There are also 13 boardings at the bottom of Slide Brook by skiers traveling back to Lincoln Peak and 10 boardings at Manlin Road, which is the stop that serves Slide Brook for skiers traveling to Mount Ellen. There is also an average of 22 boardings at various other locations. Again, ridership can vary significantly based on snow conditions, and on Saturdays with good snow, boardings at the bottom of Slide Brook can overload buses, with passengers occasionally being left behind.

Sundays

Sunday ridership patterns are similar to those on Saturdays, but with slightly lower volumes (see Figure 4). An average of 157 passengers board at Lincoln Peak, followed by 140 at Mount Ellen. Six riders boarded at Slide Brook and two board at Manlin Road, with another 10 riders board at other stops along the route.

Ridership by Trip

Weekdays

Weekday ridership is low in the morning, with five or fewer riders on trips before 10 AM, but increase and remains steady throughout the rest of the service day (see Figure 5). Ridership on trips to Mount Ellen is highest between 10 AM and 1 PM, carrying 13 to 17 riders on all trips, then decreases in the afternoon, with trips carrying between five and nine riders. In the Lincoln Peak direction, ridership is low throughout the morning and increases in the afternoon, reaching 14 riders at 12:15 PM and then peaking between 2:15 PM and 3:15 PM, when all three trips carry 16-18 riders. Ridership drops off after 4 PM.

Figure 2: Weekday Ridership by Stop

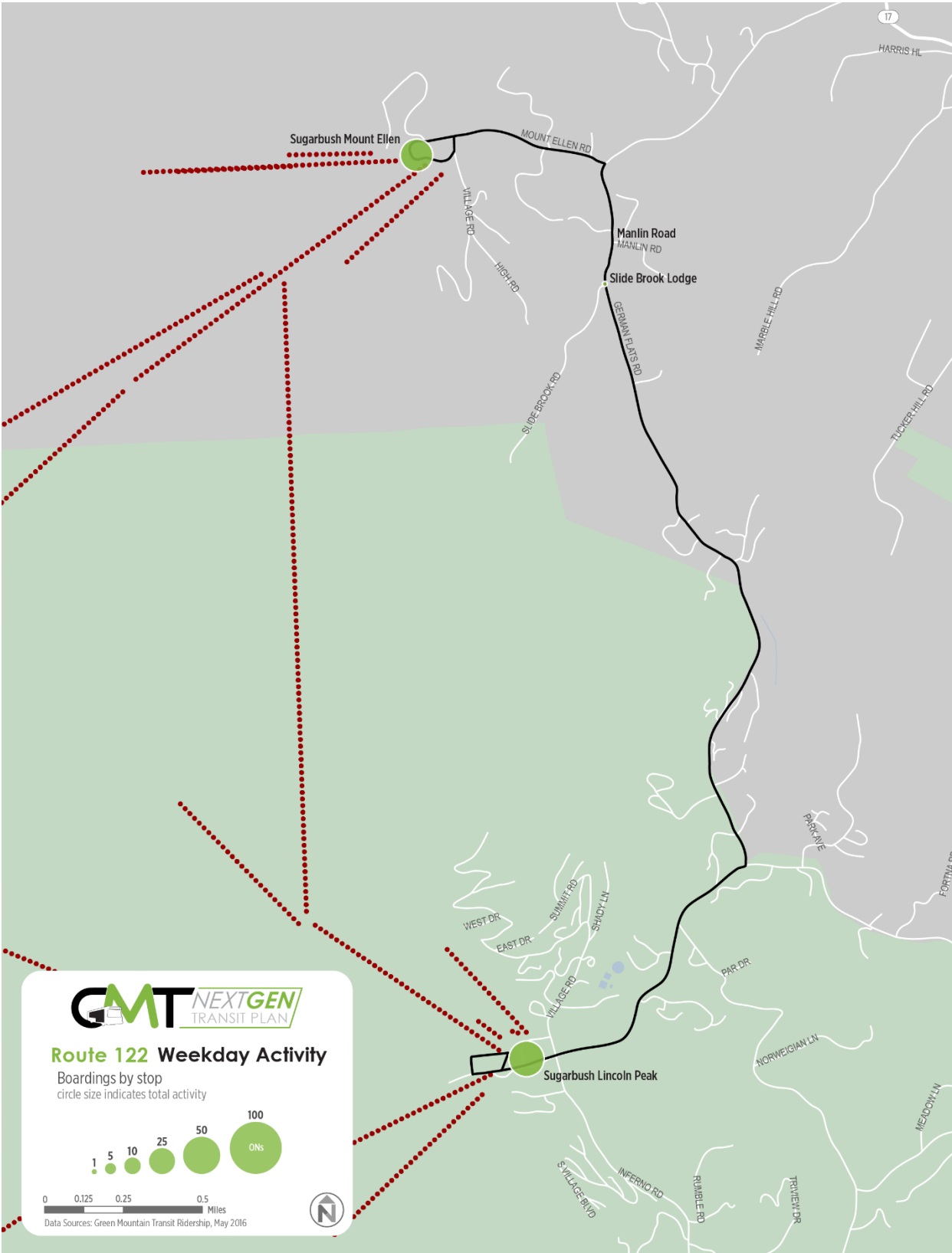


Figure 3: Saturday Ridership by Stop

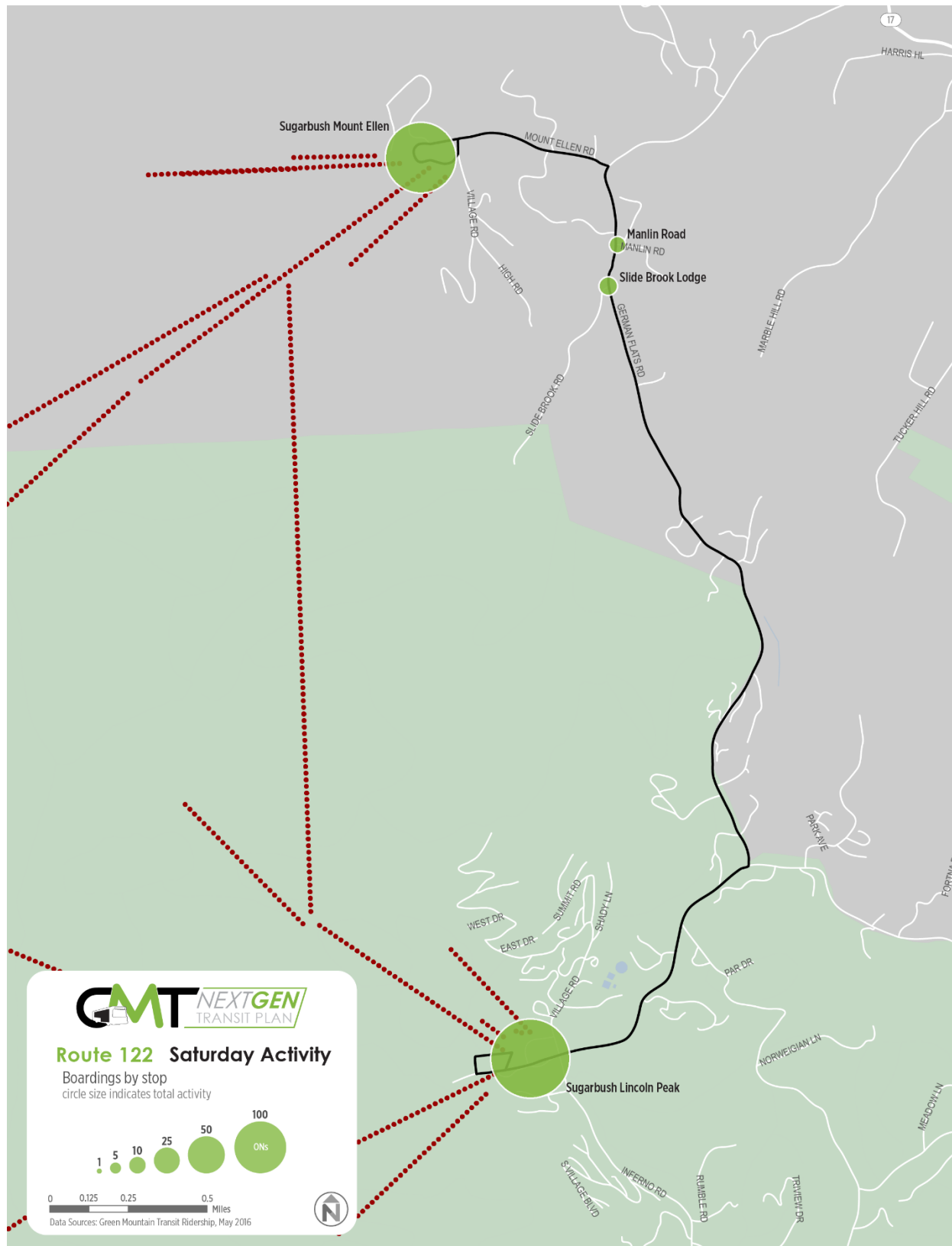


Figure 4 Sunday Ridership by Stop

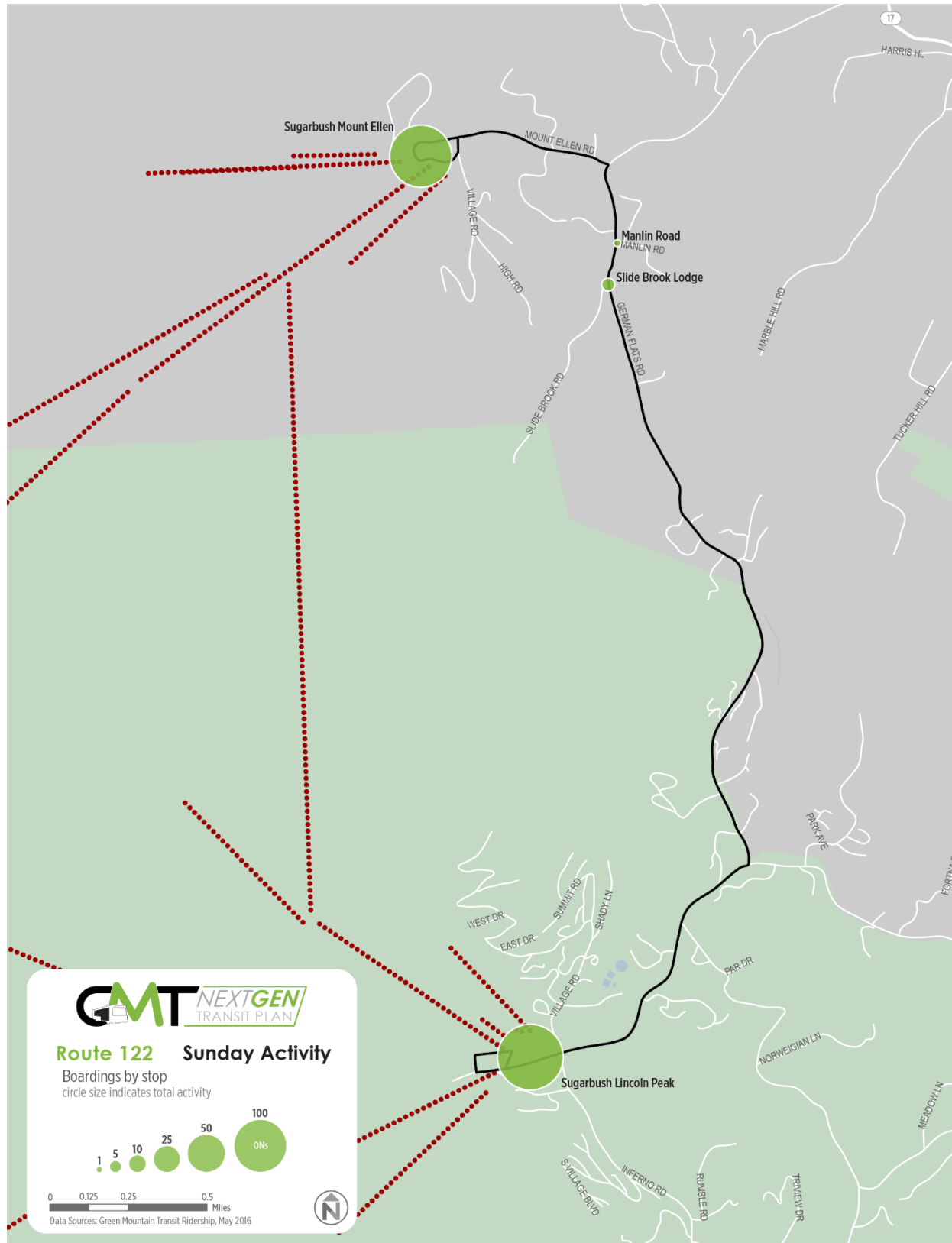
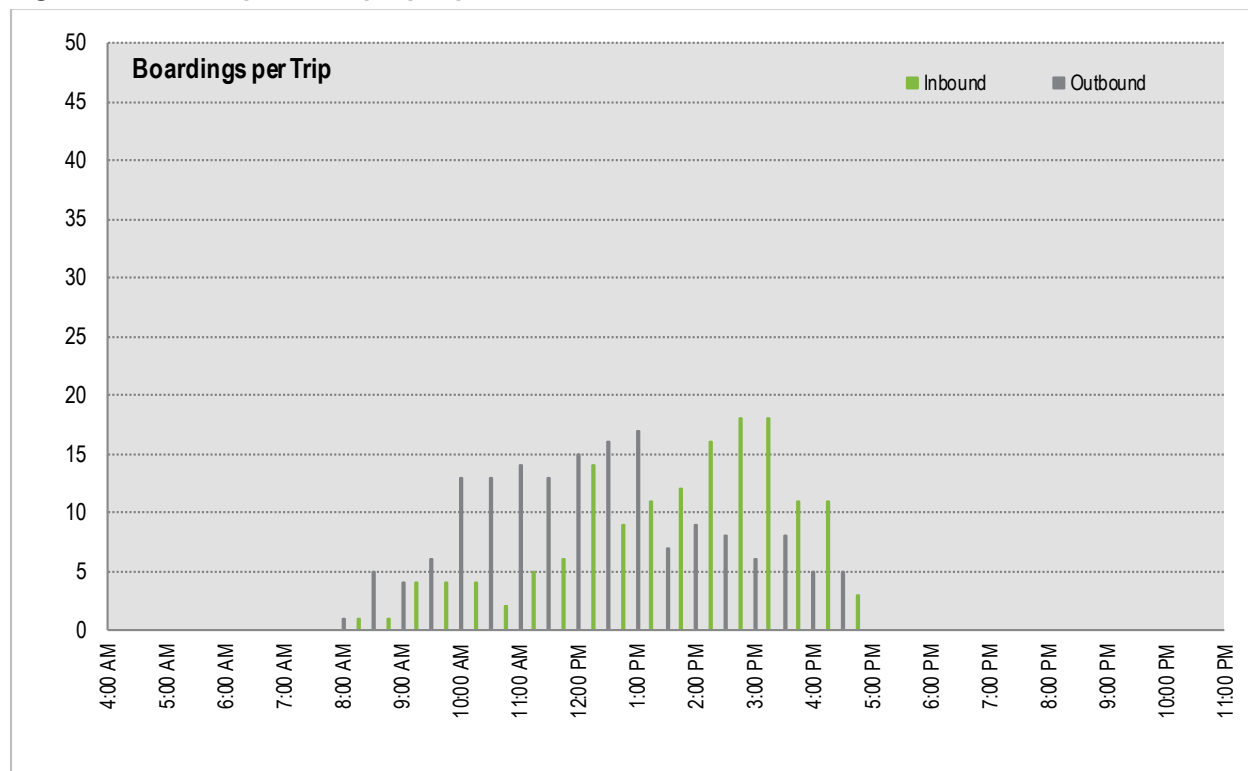


Figure 5: Weekday Ridership by Trip



Saturdays

Ridership is much higher on Saturdays, but follows a similar pattern over the course of the day. Ridership is generally lower in the morning, then higher in the middle of the day traveling to Mount Ellen, with most trips carrying between 15 to 20 boardings (the 1 PM trip has 20 boardings). Ridership back to Lincoln Peak is higher in the afternoon, with the highest ridership trips carrying 17-20 boardings between 2:15 PM and 3:15 PM.

Sundays

Sunday ridership follows the same pattern during the service day, but with slightly lower numbers than weekday ridership. Ridership is highest on the 2:45 PM and 3:15 PM trips towards Lincoln Peak, which both have 15 boardings per trip.

SERVICE PRODUCTIVITY

Route 122's productivity is highest on weekends (see Table 2). On Saturdays, the route averages 458 total passengers and 50.9 passengers per revenue service hours at a cost of \$1.33 per passenger. On Sundays, the route averages 314 total passengers and 34.9 passengers per revenue service hour at a cost of \$1.93 per passenger. On weekdays, the route averages 89 total passengers and 9.9 passengers per revenue service hour at a cost of \$7.19 per passenger. The route exceeds VTrans' Successful thresholds for productivity and cost-effectiveness on Saturdays and Sundays and meets the Acceptable thresholds on weekdays.

Figure 6: Saturday Ridership by Trip

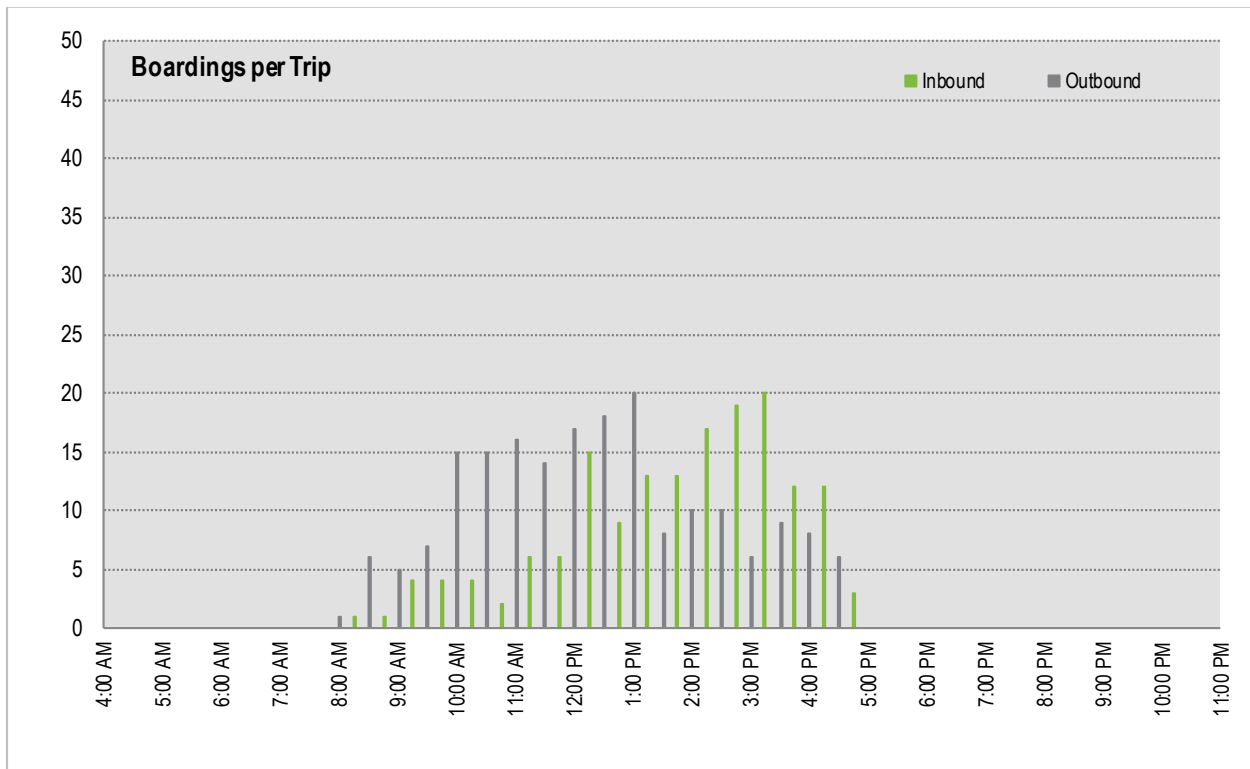


Figure 7: Sunday Ridership by Trip

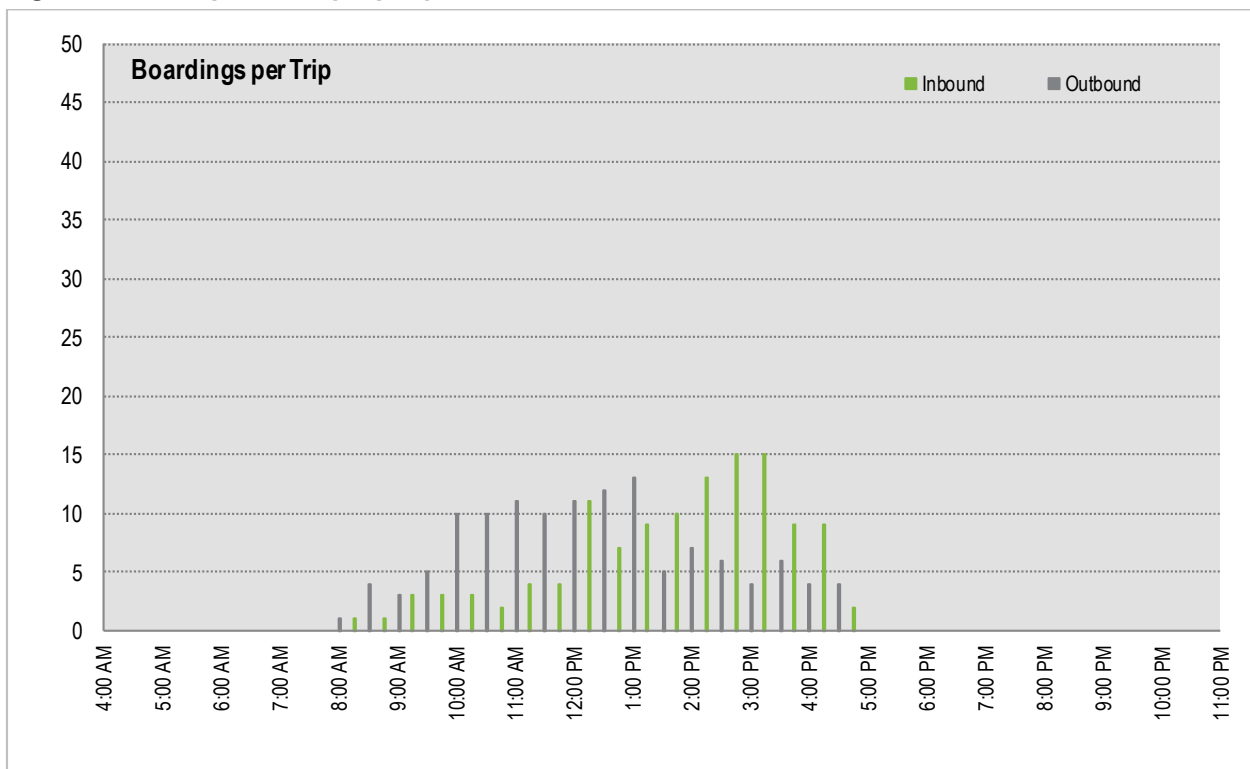


Table 2: Productivity Statistics

	MONDAY-FRIDAY	SATURDAY	SUNDAY
Average Daily Ridership	89	458	314
Pax/Revenue Vehicle Hour	9.9	50.9	34.9
VTrans "Successful" Threshold	14.55	14.55	14.55
VTrans "Acceptable Threshold	7.27	7.27	7.27
Passengers/Round Trip	4.9	25.4	17.4
Passengers/Revenue Vehicle Mile	0.6	3.2	2.2
Cost/Passenger	\$7.19	\$1.33	\$1.93
VTrans "Successful" Threshold	\$5.82	\$5.82	\$5.82
VTrans "Acceptable Threshold	\$11.64	\$11.64	\$11.64

Source: Green Mountain Transit, May 2016; VTrans Performance Reviews (2016)

SERVICE IMPROVEMENT OPTIONS

On weekends, Route 122 is very heavily used. On weekdays, ridership is significantly lower but still acceptably good. Potential improvements for Route 122 include:

- **Provide More Frequent Service on Saturdays:** Route 122 has high ridership on Saturdays, and when snow conditions are good, can get very crowded and sometimes overcrowded. With the deployment of one additional bus, Saturday service could be provided every 15 minutes.
- **Operate Saturday Service until 6 PM:** The last trips currently depart Lincoln Peak at 4:30 PM and from Mount Ellen at 4:45 PM. To better serve après-ski activities and those who ski until the last chair, service could be extended to 6 PM.