

MOUNTAIN ROAD SERVICE AT A GLANCE

The 2022-2023 season provided an optimistic outlook on the long partnership between Stowe Mountain Resort and Green Mountain Transit. With the implementation of a new parking plan for the season and increased investment going toward public transit, there was increased utilization of the Stowe Mountain Road Shuttle from pre-pandemic levels which helped reduce congestion during the winter.

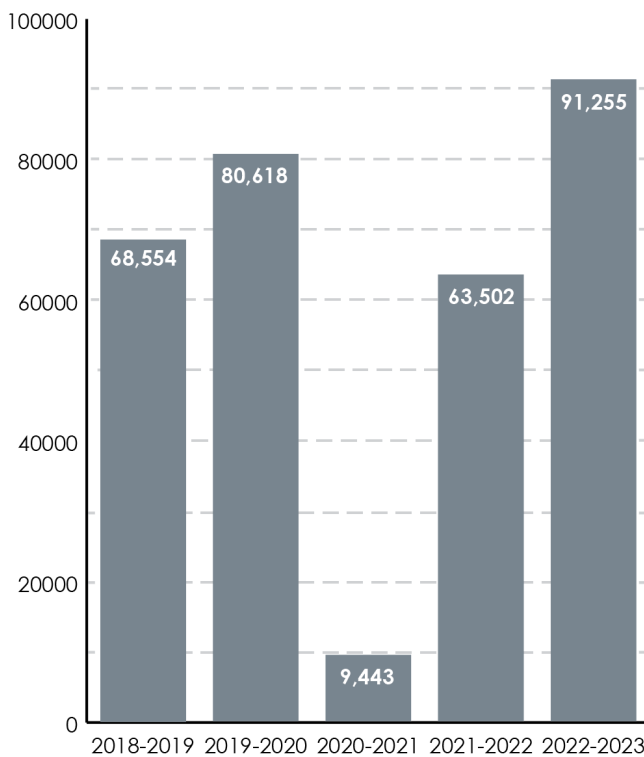
Mountain Rd Service started on November 25, 2022 and ran till April 9, 2023 for a total of 136 operating days, in which it provided transportation to over 91,000 people.



Green Mountain Transit

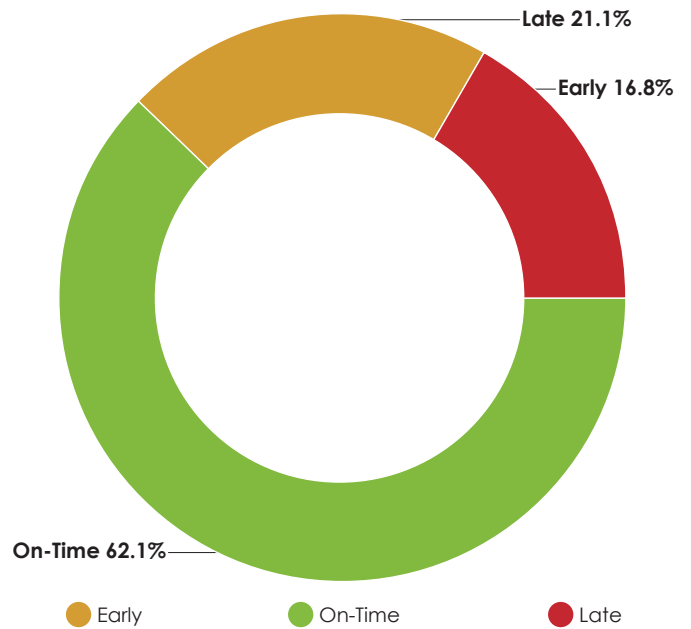
TOTAL RIDERSHIP A LOOK BACK AT PAST SEASONS

Ridership has bounced back with a staggering 866% increase over the 2020-2021 season. This is a 13.2% increase from the 2019-2020 season that was minimally affected by the pandemic.



ON-TIME PERFORMANCE A PEAK INTO THE SEASON

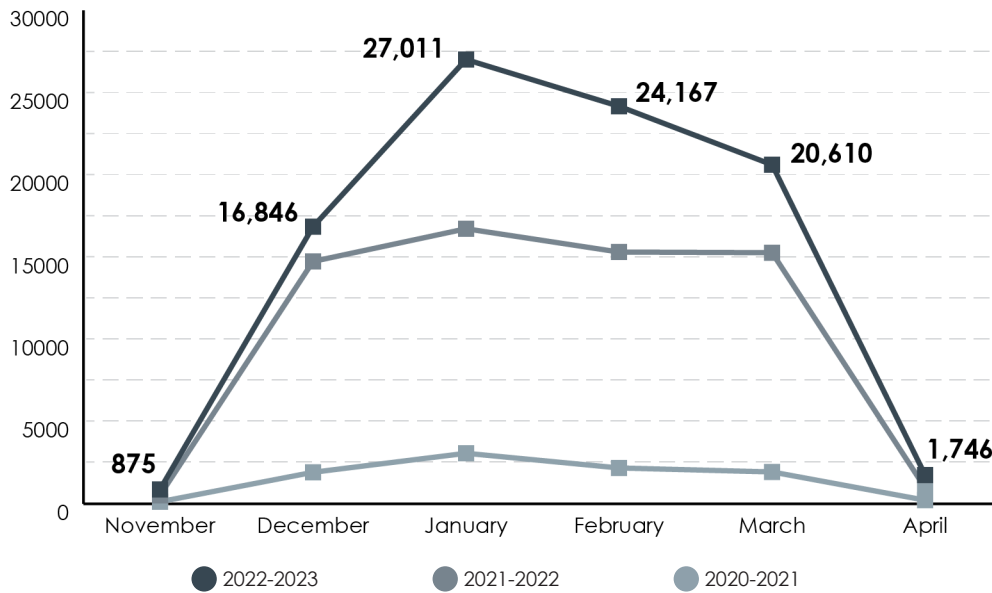
The following graphic provides on-time performance data for seasonal service in Stowe over the last ski season. A total of 34,846 timepoints were among were monitored along this route.



Early- vehicles departing the stop more than one minute early
On-Time- vehicles departing the stop less than one minute early & less than five minutes late
Late- vehicles departing the stop more than five minutes late

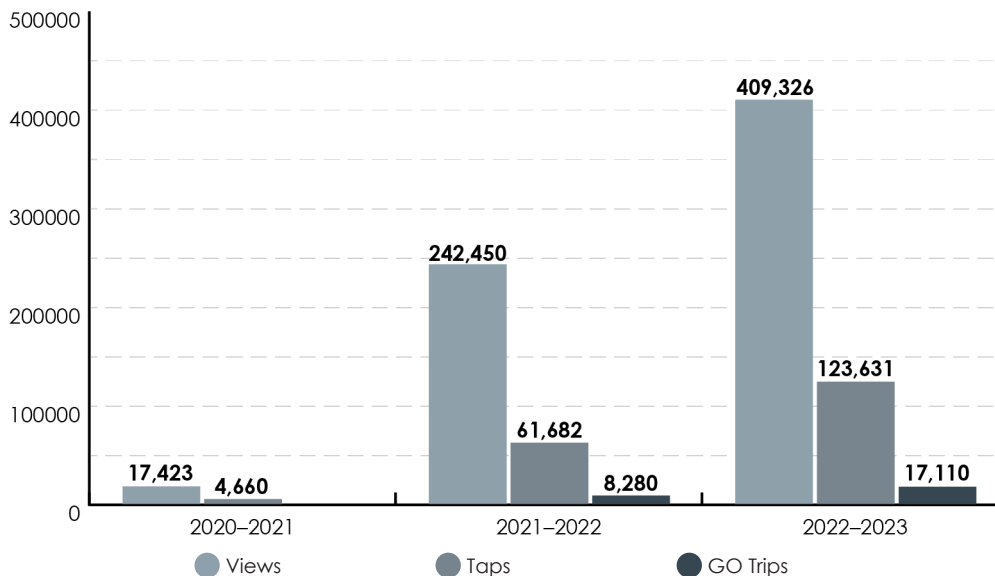
TRENDS IN MONTHLY TOTALS LOOKING BACK AT THE LAST THREE YEARS

Ridership tends to be lowest in November and highest in January. Across all months ridership was lowest in the 2020-2021 ski season, which can be attributed to the pandemic.



LOOKING BACK AT TRANSIT USAGE

Transit is a mobility app that allows passengers to track their bus in real-time. The following graph shows the breakdown of views, clicks and go trips over the last three seasons. App usage has more than recovered after the pandemic, with the number of clicks and views showing exponential growth from the previous season. This can be attributed to an increase in ridership over last year, as well as continuing to not print a bus map and guide.



Views- number of times a route is displayed on the list of nearby options

Taps- number of times an app user taps on a particular route

GO Trips- number of riders who utilized the [GO function](#) within the app